



**EMI**  
ELECTRIC MOTION

**EMIAE  
ESCAPE  
2021**



*EPURE RANGE 202i*





# EPURE LITE

The Epure **Lite** is the standard model of the Epure family, but it does benefit of all its technology.

The Lite is good for all those who want to practice trial or ride off-road, with a silent motorbike that requires zero maintenance.

Private individuals, training schools or off-road centers, the Epure Lite will please a large crowd of enthusiasts.

*FROM INITIATION...*



**MAX SPEED\***  
65 KM/H

**RANGE\***  
43 KM

**WEIGHT**  
74 KG

**TORQUE**  
600 NM

**ROAD LEGAL**  
125 CM<sup>3</sup>

*...TO PERFORMANCE*

\*Range and top speed vary based on riding style and drivetrain configuration. Speed of 65 km/h on Off Road utilisation on private land .

# EPURE LITE

## TECHNICAL SHEET

FRAME	15CDV6
FRONT BRAKE	Disc 182 mm 4 pistons
REAR BRAKE	Disc 150 mm 2 pistons
FRONT RIMS	Morad Trial 1.6"x21"
REAR RIMS	Morad Trial 2.15"x18"
TIRES	Michelin X11
FRONT SUSPENSION	Tech 175 mm
REAR SUSPENSION	R16V 170 mm

## BATTERY

ENERGY	Li-ion
VOLTAGE	50.4 V
CAPACITY	1875 Wh
WEIGHT	10,5 kg
CHARGING TIME	15 A
LIFE CYCLE	3h00
MINI CHARGING TEMPERATURE	1000
	0°C

## ENGINE

NOMINAL POWER	6 Kw
PEAK POWER	11 Kw

## DIMENSIONS

SEAT HEIGHT	670 mm
WHEEL BASE	1325 mm
GROUND CLEARANCE	320 mm
FOOTREST HEIGHT	360 mm
WIDTH	825 mm

## SERIES EQUIPMENT

MAPS	3
------	---

## OPTIONS

PRB (included on presented model)	
TRIAL TRAINING MAPS	
FLYWHEEL	
CHARGER 25A (2h15)	



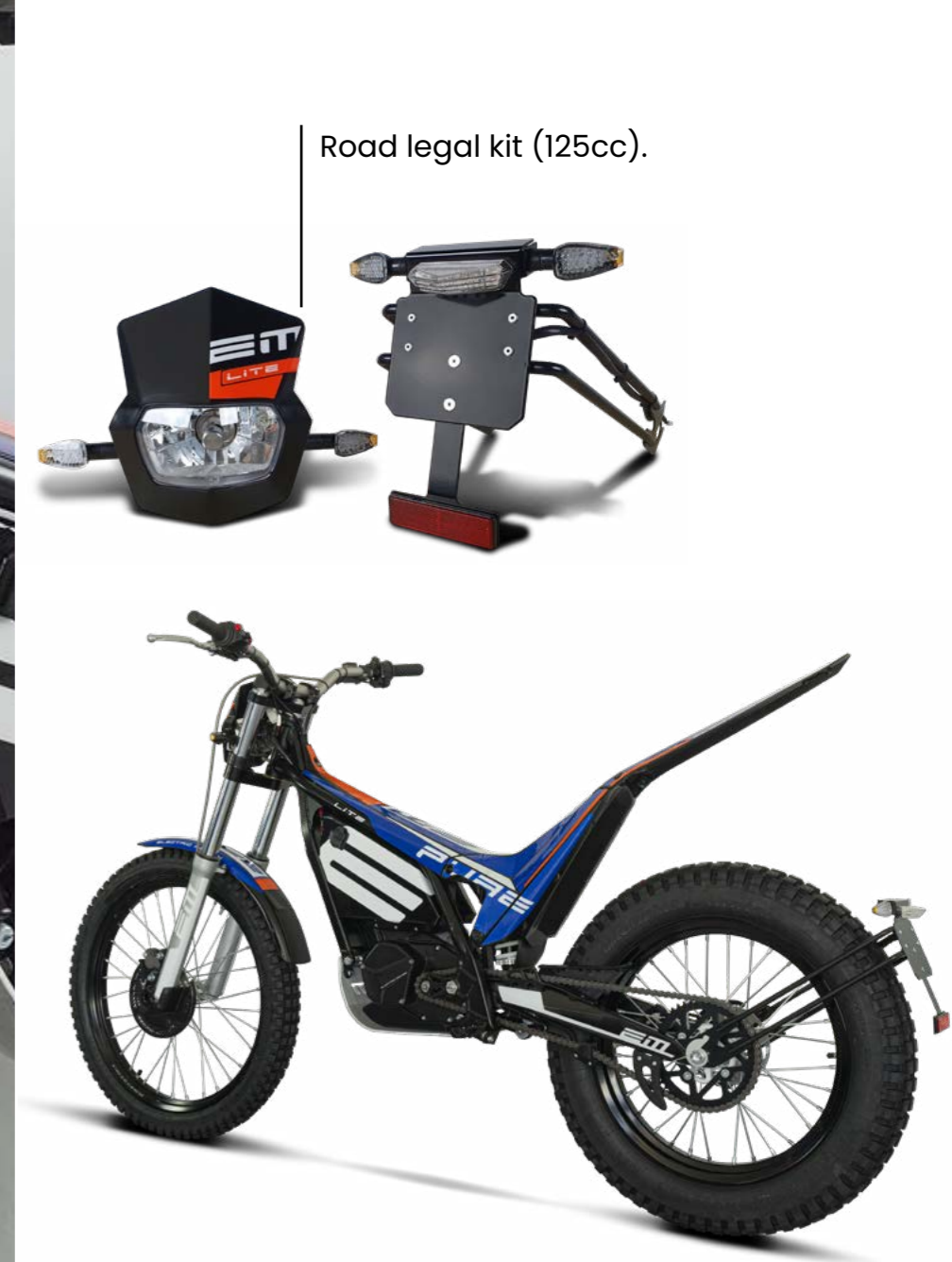
## NEW

- Geometry
- Clamps
- Battery software
- Optimized motor
- More power at mid & high RPM
- More torque
- Battery charging socket
- Mapping
- Hebo grips
- Graphic design
- Aluminium chain tensionneur
- Black frame & swing arm





Black mat frame.



Road legal kit (125cc).

# EPURE SPORT

Designed for people that looking for big sensations, the Epure Sport is pure performance...

Power, battery lifetime, torque, speed, weight... the Sport model has never been that improved before.

The Epure Sport proves that an electric motorcycle can be as performing as the best combustion-powered ones. Without any compromise.

*EMOTION AND...*



**MAX SPEED\***  
65 KM/H

**AUTONOMY\***  
43 KM

**WEIGHT**  
71 KG

**TORQUE**  
600 NM

**ROAD LEGAL**  
125 CM<sup>3</sup>

*...SENSATION*

\*Range and top speed vary based on riding style and drivetrain configuration. Speed of 65 km/h on Off Road utilisation on private land .



# EPURE SPORT

## TECHNICAL SHEET

FRAME	15CDV6
FRONT BRAKE	Disc 182 mm 4 pistons
REAR BRAKE	Disc 150 mm 2 pistons
FRONT RIMS	Morad Trial 1.6"x21"
REAR RIMS	Morad Trial 2.15"x18"
TIRES	Michelin X11
FRONT SUSPENSION	Alu Racing Tech 175 mm
REAR SUSPENSION	R16V 170 mm

## BATTERY

ENERGY	Li-ion
VOLTAGE	50.4 V
CAPACITY	1875 Wh
WEIGHT	10,5 kg
CHARGING TIME	15 A
LIFE CYCLE	3h00
MINI CHARGING TEMPERATURE	1000
	0°C

## ENGINE

NOMINAL POWER	6 Kw
PEAK POWER	11 Kw

## DIMENSIONS

SEAT HEIGHT	670 mm
WHEEL BASE	1325 mm
GROUND CLEARANCE	320 mm
FOOTREST HEIGHT	360 mm
WIDTH	825 mm

## SERIES EQUIPMENT

MAPS	3
PRB	

## OPTIONS

LED KIT (included on presented model)	
TRIAL TRAINING MAPS	
FLYWHEEL	
CHARGER 25A (2h15)	



## NEW

- Tech Aluminium Racing fork
- Geometry
- Clamps
- Battery software
- Optimized motor
- More power at mid & high RPM
- More torque
- Battery charging socket
- Mapping
- Hebo grips
- Graphic design
- Aluminium chain tensionneur
- Black frame & swing arm





LED kit : not homologated for road use (option).



Battery with new charging socket cover.





# EPURE RACE

This is the first homologated electric trial motorcycle ever sold equipped with a diaphragm clutch.

Imagine one of the lightest trial motorcycles on the market, add the torque of an electric powertrain and finally a high performance diaphragm clutch...

The 2021 model has even more power at high RPM.

The Epure **Race** has no limit... except for its pilot's.

***E TRIAL IS ENTERING...***



**MAX SPEED\***  
**70**KM/H

**RANGE\***  
**43**KM

**WEIGHT**  
**75**KG

**TORQUE**  
**600**NM

**ROAD LEGAL**  
**125**CM<sup>3</sup>

***...A NEW ERA***

\*Range and top speed vary based on riding style and drivetrain configuration. Speed of 70 km/h on Off Road utilisation on private land.



# EPURE RACE

## TECHNICAL SHEET

FRAME	15CDV6
FRONT BRAKE	Disc 182 mm 4 pistons
REAR BRAKE	Disc 150 mm 2 pistons
FRONT RIMS	Morad Trial 1.6"x21"
REAR RIMS	Morad Trial 2.15"x18"
TIRES	Michelin X11
FRONT SUSPENSION	Alu Racing Tech 175 mm
REAR SUSPENSION	R16V 170 mm

## BATTERY

ENERGY	Li-ion
VOLTAGE	50.4 V
CAPACITY	1875 Wh
WEIGHT	10,5 kg
CHARGING TIME	15 A
LIFE CYCLE	3h00
MINI CHARGING TEMPERATURE	1000
	0°C

## ENGINE

NOMINAL POWER	6 Kw
PEAK POWER	11 Kw

## DIMENSIONS

SEAT HEIGHT	670 mm
WHEEL BASE	1325 mm
GROUND CLEARANCE	320 mm
FOOTREST HEIGHT	360 mm
WIDTH	825 mm

## SERIES EQUIPMENT

DIAPHRAGM CLUTCH	Hydraulic
FLYWHEEL	

## OPTIONS

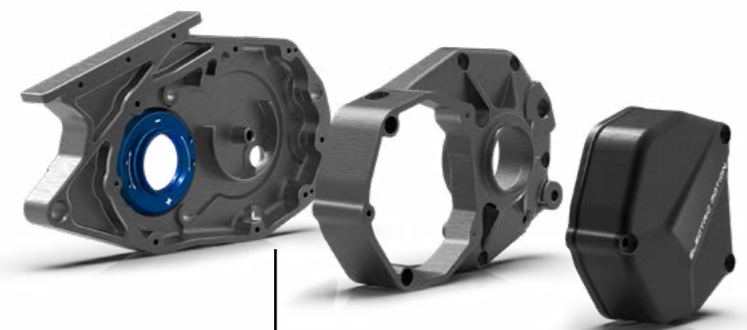
FRB	
TRIAL TRAINING MAPS	
CHARGER 25A (2h15)	



## NEW

- Tech Aluminium Racing fork
- Geometry
- Clamps
- Battery software
- Optimized motor
- More power at mid & high RPM
- More torque
- Battery charging socket
- Mapping
- Hebo grips
- Graphic design
- Aluminium chain tensioneur
- Black frame & swing arm





CNC parts, hydraulic diaphragm clutch.



EM pilot : Gaël CHATAGNO  
1er French Championship ST (Auron)  
1er World Championship Trial E (Isola 2000)



Aluminium Racing Tech® fork







Pictures by Laurie Labissy





*ESCAPE RANGE 202i*





**NEW**

# ESCAPE **LITE**

The Escape **Lite** offers exceptional value for money, equipped with a 1.9Kwh battery, it opens the doors for everyone to discover silent off-road excursions ...

New model of the Escape family, discover the lines and the smart and casual design of our Escape Lite 2021.

Reach across the borders and live the adventure with the Escape Lite.

**EMOTION AND...**



**MAX SPEED\***  
**75**KM/H

**RANGE\***  
**43**KM

**WEIGHT**  
**75**KG

**TORQUE**  
**450**NM

**ROAD LEGAL**  
**125**CM<sup>3</sup>

**...SENSATION**

\*Range and top speed vary based on riding style and drivetrain configuration. Speed of 75 km/h on Off Road utilisation on private land .



# ESCAPE **LITE**

## TECHNICAL SHEET

FRAME	15CDV6
FRONT BRAKE	Disc 182 mm 4 pistons
REAR BRAKE	Disc 150 mm 2 pistons
FRONT RIMS	Morad Trial 1.6"x21"
REAR RIMS	Morad Trial 2.15"x18"
TIRES	Michelin X11
FRONT SUSPENSION	Tech 175 mm
REAR SUSPENSION	R16V 170 mm

## BATTERY

ENERGY	Li-ion
VOLTAGE	50.4 V
CAPACITY	1875 Wh
WEIGHT	10,5 kg
CHARGING TIME	15 A
LIFE CYCLE	3h00
MINI CHARGING TEMPERATURE	1000
	0°C

## ENGINE

NOMINAL POWER	6 Kw
PEAK POWER	11 Kw

## DIMENSIONS

SEAT HEIGHT	820 mm
WHEEL BASE	1325 mm
GROUND CLEARANCE	320 mm
FOOTREST HEIGHT	360 mm
WIDTH	825 mm

## SERIES EQUIPMENT

MAPS	3
ESCAPE TOP COVER / SEAT	
ESCAPE TOP COVER SUPPORT	

## OPTIONS

PRB (included on presented model)	
LED KIT	
TRIAL TRAINING MAPS	
FLYWHEEL	
CHARGER 25A (2h15)	



## NEW

- Geometry
- Clamps
- Battery software
- Optimized motor
- More power at mid & high RPM
- More torque
- Battery charging socket
- Mapping
- Hebo grips
- Top battery cover & seat
- Graphic design
- Aluminium chain tensioneur
- Black frame & swing arm





Black mat frame.



EM rider : Christophe BRUAND



Road legal kit (125cc).





# ESCAPE

The **Escape** is the perfect bike to ride off-road from Electric Motion.

Extend your boundaries and discover new horizons with the capabilities and performances of the new Escape.

New smart and casual design, an improved seat for a better riding position, reach across the borders and live the adventure with the Escape...

**ESCAPE...**



**MAX SPEED\***  
**75**KM/H

**RANGE\***  
**61**KM

**WEIGHT**  
**77**KG

**TORQUE**  
**450**NM

**ROAD LEGAL**  
**125**CM<sup>3</sup>

**...YOURSELF**

\*Range and top speed vary based on riding style and drivetrain configuration. Speed of 75 km/h on Off Road utilisation on private land .



# ESCAPE

## TECHNICAL SHEET

FRAME	15CDV6
FRONT BRAKE	Disc 182 mm 4 pistons
REAR BRAKE	Disc 150 mm 2 pistons
FRONT RIMS	Morad Trial 1.6"x21"
REAR RIMS	Morad Trial 2.15"x18"
TIRES	Michelin X11
FRONT SUSPENSION	Tech 175 mm
REAR SUSPENSION	R16V 170 mm

## BATTERY

ENERGY	Li-ion
VOLTAGE	50.4 V
CAPACITY	2620 Wh
WEIGHT	14 kg
CHARGING TIME	15 A
LIFE CYCLE	4h15
MINI CHARGING TEMPERATURE	1000
	0°C

## ENGINE

NOMINAL POWER	6 Kw
PEAK POWER	11 Kw

## DIMENSIONS

SEAT HEIGHT	820 mm
WHEEL BASE	1325 mm
GROUND CLEARANCE	320 mm
FOOTREST HEIGHT	360 mm
WIDTH	825 mm

## SERIES EQUIPMENT

MAPS	3
ESCAPE TOP COVER / SEAT	

## OPTIONS

LED KIT (Off Road rear kit included on presented model)	
TRIAL TRAINING MAPS	
FLYWHEEL	
CHARGER 25A (2h15)	



## NEW

- Geometry
- Clamps
- Battery software
- Optimized motor
- More power at mid & high RPM
- More torque
- Battery charging socket
- Mapping
- Hebo grips
- Top battery cover & seat
- Graphic design
- Aluminium chain tensioneur
- Black frame & swing arm





Escape battery with large range (2.6 kWh).



EM rider : Christophe BRUAND

New design for the battery top cover and the seat.





**NEW**

# ESCAPE "R"

The **Escape "R"** is the sport model with great range.

With ultra high-end equipment, a "Race" design, l'Escape "R" is geared towards off-road racing.

With this brand new model, the adventure is now taken to the extreme.

Cross the border and live the adventure with the Escape "R"...

**LIVE...**



**MAX SPEED\***  
**70**KM/H

**RANGE\***  
**61**KM

**WEIGHT**  
**85**KG

**TORQUE**  
**600**NM

**ROAD LEGAL**  
**125**CM<sup>3</sup>

**...THE ADVENTURE**

\*Range and top speed vary based on riding style and drivetrain configuration. Speed of 70 km/h on Off Road utilisation on private land .

**EM**  
ELECTRIC MOTION

**EM**  
ELECTRIC MOTION



# ESCAPE <sup>A</sup>

## TECHNICAL SHEET

FRAME	15CDV6
FRONT BRAKE	Disc 182 mm 4 pistons
REAR BRAKE	Disc 150 mm 2 pistons
FRONT RIMS	Morad Trial 1.6"x21"
REAR RIMS	Morad Trial 2.15"x18"
TIRES	Michelin X11
FRONT SUSPENSION	Alu Racing Tech 175 mm
REAR SUSPENSION	R16V 170 mm

## BATTERY

ENERGY	Li-ion
VOLTAGE	50.4 V
CAPACITY	2620 Wh
WEIGHT	14 kg
CHARGING TIME	15 A
LIFE CYCLE	4h15
MINI CHARGING TEMPERATURE	1000
	0°C

## ENGINE

NOMINAL POWER	6 Kw
PEAK POWER	11 Kw

## DIMENSIONS

SEAT HEIGHT	820 mm
WHEEL BASE	1325 mm
GROUND CLEARANCE	320 mm
FOOTREST HEIGHT	360 mm
WIDTH	825 mm

## SERIES EQUIPMENT

MAPS	3
DIAPHRAGM CLUTCH	Hydraulic
ESCAPE TOP COVER / SEAT	
FLYWHEEL	

## OPTIONS

FRB	
TRIAL TRAINING MAPS	
CHARGER 25A (2h15)	



## NEW

- Aluminium Racing Teck® fork
- Geometry
- Clamps
- Battery software
- Optimized motor
- More power at mid & high RPM
- More torque
- Battery charging socket
- Mapping
- Hebo grips
- Top battery cover & seat
- Graphic design
- Aluminium chain tensioneur
- Black frame & swing arm



New battery top cover and seat design.



Cockpit (battery level indicator, led maps).



EM rider : Christophe BRUAND

Aluminium Racing Tech<sup>®</sup> fork







Pictures by Laurie Labissy



## EPURE LITE

WEIGHT **74**KG MAX SPEED **65**KM/H RANGE **43**KM TORQUE **600**NM ROAD LEGAL **125**CM<sup>3</sup>



## EPURE SPORT

WEIGHT **71**KG MAX SPEED **65**KM/H RANGE **43**KM TORQUE **600**NM ROAD LEGAL **125**CM<sup>3</sup>



## EPURE RACE

WEIGHT **75**KG MAX SPEED **70**KM/H RANGE **43**KM TORQUE **600**NM ROAD LEGAL **125**CM<sup>3</sup>



WEIGHT **75**KG MAX SPEED **75**KM/H RANGE **43**KM TORQUE **450**NM ROAD LEGAL **125**CM<sup>3</sup>



WEIGHT **80**KG MAX SPEED **75**KM/H RANGE **61**KM TORQUE **450**NM ROAD LEGAL **125**CM<sup>3</sup>



WEIGHT **85**KG MAX SPEED **70**KM/H RANGE **61**KM TORQUE **600**NM ROAD LEGAL **125**CM<sup>3</sup>

**FRAME**  
**FRONT BRAKE**  
**REAR BRAKE**  
**FRONT RIM**  
**REAR RIM**  
**TIRES**  
**FRONT SUSPENSION**  
**REAR SUSPENSION**

15CDV6  
Disc 182mm 4 pistons  
Disc 150mm 2 pistons  
Morad Trial 1,6"x21"  
Morad Trial 2,15"x18"  
Michelin® X11  
Tech® 175mm  
R16V 170mm

15CDV6  
Disc 182mm 4 pistons  
Disc 150mm 2 pistons  
Morad Trial 1,6"x21"  
Morad Trial 2,15"x18"  
Michelin® X11  
Alu Racing Tech® 175mm  
R16V 170mm

15CDV6  
Disc 182mm 4 pistons  
Disc 150mm 2 pistons  
Morad Trial 1,6"x21"  
Morad Trial 2,15"x18"  
Michelin® X11  
Alu Racing Tech® 175mm  
R16V 170mm

**NEW** 15CDV6  
Disc 182mm 4 pistons  
Disc 150mm 2 pistons  
Morad Trial 1,6"x21"  
Morad Trial 2,15"x18"  
Michelin® X11  
Tech® 175mm  
R16V 170mm

15CDV6  
Disc 182mm 4 pistons  
Disc 150mm 2 pistons  
Morad Trial 1,6"x21"  
Morad Trial 2,15"x18"  
Michelin® X11  
Tech® 175mm  
R16V 170mm

**NEW** 15CDV6  
Disc 182mm 4 pistons  
Disc 150mm 2 pistons  
Morad Trial 1,6"x21"  
Morad Trial 2,15"x18"  
Michelin® X11  
Alu Racing Tech® 175mm  
R16V 170mm

**ENERGY**  
**VOLTAGE**  
**CAPACITY**  
**WEIGHT**  
**CHARGER**  
**CHARGING TIME**  
**LIFE CYCLE**  
**MINI CHARG. TEMP.**

Li-ion  
50,4 V  
1875 Wh  
10,5 kg  
15 A  
3h20  
1000  
0°C

Li-ion  
50,4 V  
1875 Wh  
10,5 kg  
15 A  
3h20  
1000  
0°C

Li-ion  
50,4 V  
1875 Wh  
10,5 kg  
15 A  
3h20  
1000  
0°C

Li-ion  
50,4 V  
1875 Wh  
10,5 kg  
15 A  
3h20  
1000  
0°C

Li-ion  
50,4 V  
2620 Wh  
14 kg  
15 A  
4h15  
1000  
0°C

Li-ion  
50,4 V  
2620 Wh  
14 kg  
15 A  
4h15  
1000  
0°C

**NOMINAL POWER**  
**PEAK POWER**

6 Kw  
11 Kw

6 Kw  
11 Kw

6 Kw  
11 Kw

6 Kw  
11 Kw

6 Kw  
11 Kw

6 Kw  
11 Kw

**SEAT HEIGHT**  
**WHEEL BASE**  
**GROUND CLEARANCE**  
**FOOTREST HEIGHT**  
**WIDTH**

670mm  
1325mm  
320mm  
360mm  
825mm

670mm  
1325mm  
320mm  
360mm  
825mm

670mm  
1325mm  
320mm  
360mm  
825mm

820mm  
1325mm  
320mm  
360mm  
825mm

820mm  
1325mm  
320mm  
360mm  
825mm

820mm  
1325mm  
320mm  
360mm  
825mm

**MAPS**

3

3

3

3

3

3

**SERIES EQUIPMENT**

-

PRB

Hydraulic controlled  
diaphragm clutch  
Flywheel

Escape top cover/seat  
Escape top cover support

Escape top cover/seat  
PRB

Escape top cover/seat  
Hydraulic controlled  
diaphragm clutch  
Flywheel

**OPTIONS**

PRB  
Trial training maps  
Flywheel  
Charger 25 A (2h15)

LED kit  
Trial training maps  
Flywheel  
Charger 25 A (2h15)

FRB  
Trial training maps  
Charger 25 A (2h15)

PRB  
LED kit  
Trial training maps  
Flywheel  
Charger 25 A (2h15)

LED kit  
Trial training maps  
Flywheel  
Charger 25 A (2h15)

FRB  
Trial training maps  
Charger 25 A (2h15)





**ELECTRIC MOTION**  
ZAC Via Domitia  
280 Rue du Trident  
34740 Vendargues, FRANCE

[www.electric-motion.fr](http://www.electric-motion.fr)  
[info@electric-motion.fr](mailto:info@electric-motion.fr)

Office : +33 (0)4 67 41 10 90  
Mobile : +33 (0)6 87 54 95 64

Follow us on :



**EXCLUSION OF LIABILITY**

Please note that this brochure contains photos taken on private property and/or abroad. The use of these vehicles in a natural environment in your jurisdiction may be prohibited by the legislation and/or regulations in force in your region, including Article L.362-1 and in accordance with the Environmental Code.

The photos do not contain any contractual character and the potential buyer of this vehicle will remain solely responsible for the use of the vehicles, as well as for compliance with the legislation and regulations in force. Electric Motion draws the attention of all motorcyclists to the importance of wearing the prescribed protective equipment (approved helmet, gloves, jacket, pants and boots) and the need to drive responsibly, in accordance with the traffic regulations.

The purchase and commissioning of a motorcycle requires compliance with the instructions and warnings, danger of the operating manual.

The motorcycles shown in the picture may differ from the standard model in some details and some are equipped with optional accessories.

All information on the appearance, performance, dimensions and weights of motorcycles are not contractual and may contain input or printing errors. They are therefore subject to change. Please note that model specifications may vary from one country to another.